

SpectrumVision LED Video Screen System

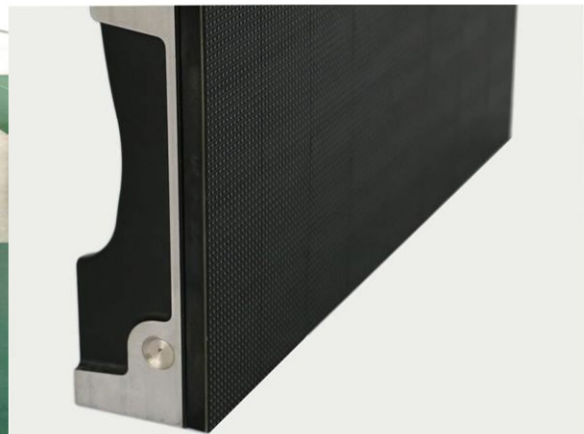


Cabinet front view



Cabinet rear view

Die-casting cabinet



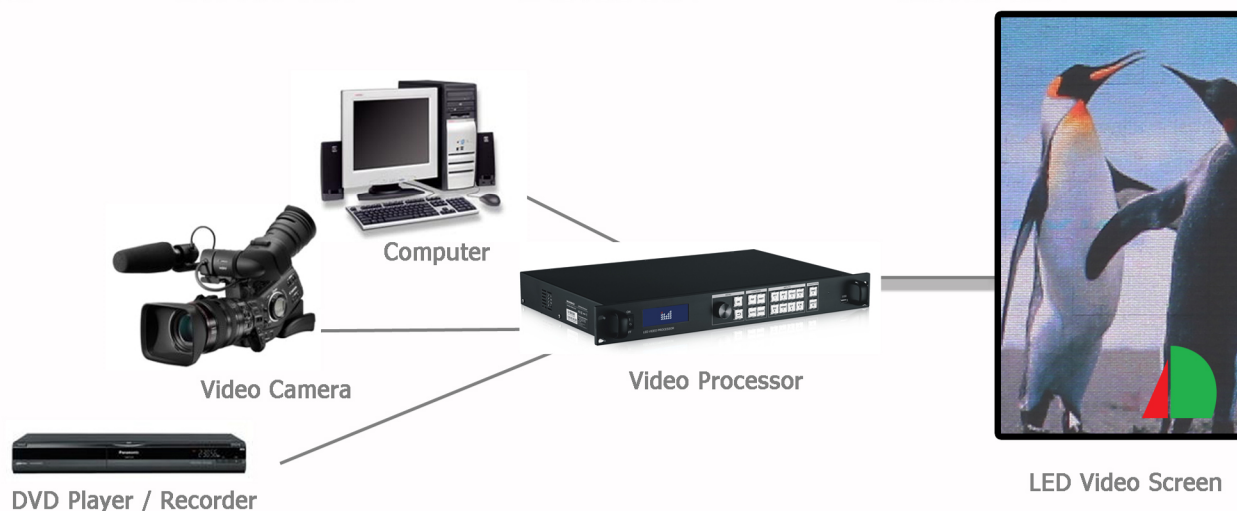
4.4 Trillion Colors LED Video Screen

Specification

Indoor Full Color LED Video Matrix Display ADT SpectrumVision SPV3.9

Display capability	Full Color motion video, computer generated graphic and text
Pixel pitch	3.9mm
Pixel configuration	3in1 SMD
LED pixel type	SMD2121
Module resolution	64 x 64 pixels
Module size	250mm x 250mm
Cabinet size	500mm x 1000mm x 78.5mm
Cabinet resolution	128 x 256 pixels
Cabinet material	Die Casting Aluminum
Brightness	1300 cd/m ²
Cabinet weight	12.8 kg per cabinet
Viewing angle	160 degree (Ver x Hor)
Avg power consumption	288 W/m ²
Max power consumption	600 W/m ²
Color grayscale (bit/color)	14 bit / 16,384
Refresh rate	3840 Hz
Driving type	1/16
Working temperature	0 to 60 degree
IP rating	IP40 (front) IP21 (rear)
Storage Humidity	10 to 90%
Life span	Typical 100,000 hours

	SPV3.9-1280576	SPV3.9-1280768	SPV3.9-30721536
Display area	5000mm x 2250mm	5000mm x 3000mm	12000mm x 6000mm
Resolution	1280 x 576 pixels	1280 x 768 pixels	3072 x 1536 pixels
Total resolution	737,280	983,040	4,718,592
Power consumption	3.3kW per screen	4.4kW per screen	21kW per screen
Weight	290kg	390kg	1850kg
Input power	240Vac 80A	240Vac 50A	415Vac 82A



System Schematics for LED Video Screen

334353-H

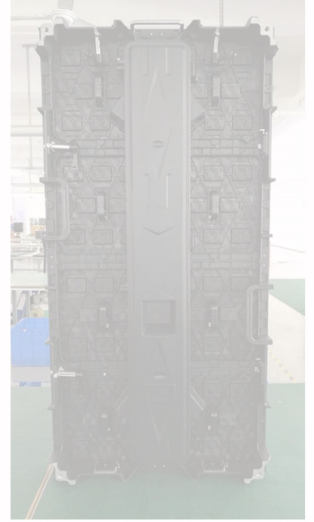
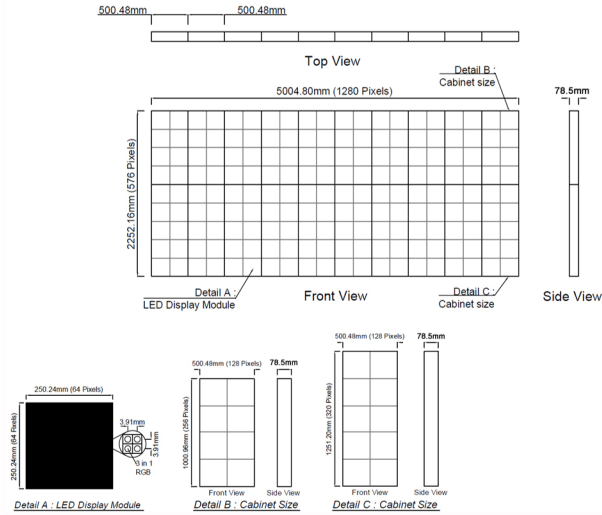
Cert No. 16887



Proposal Drawing

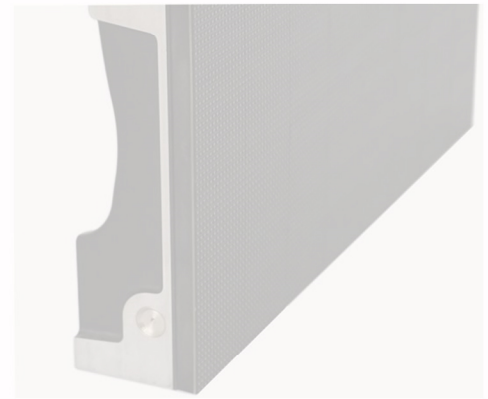
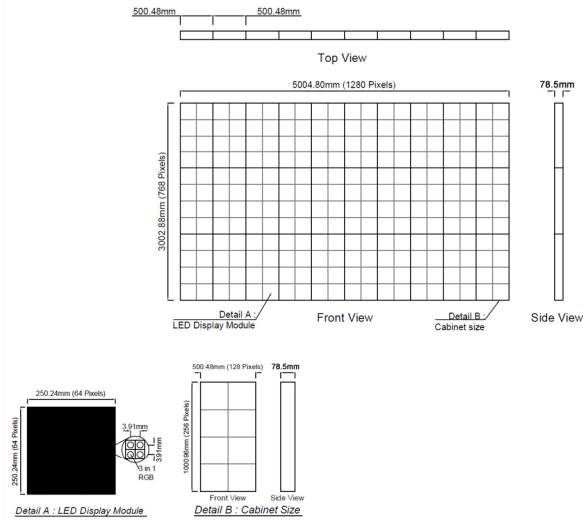
SPV3.9-1280576

FOR ILLUSTRATION ONLY



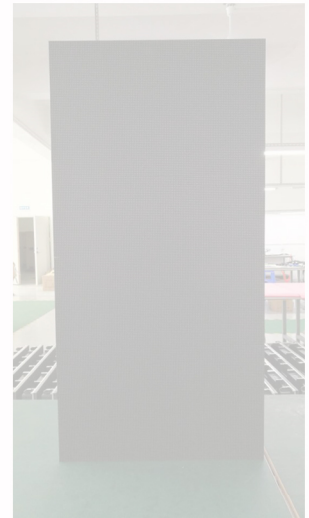
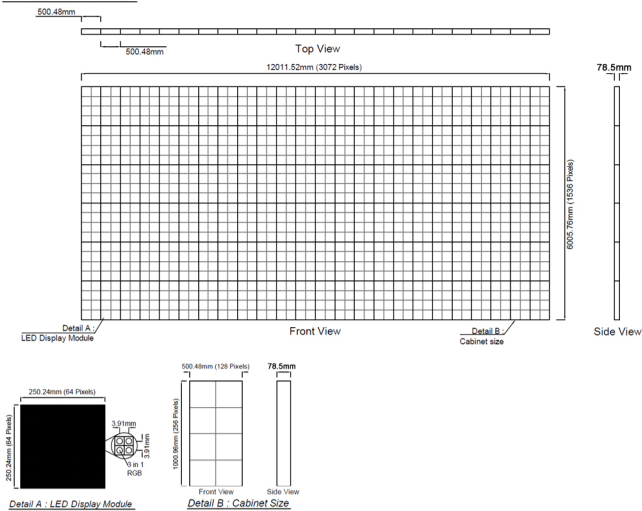
SPV3.9-1280768

FOR ILLUSTRATION ONLY



SPV3.9-30721536

FOR ILLUSTRATION ONLY



334353-H

Website: www.addisplay.com

Cert No. 16887



BS EN ISO 9001:2008